

Swiss Precision. Made to Last.



The new FELCO 500 series Swiss pocket knife is an essential accessory for work and leisure outdoor activities, combining functionality and efficient performance.



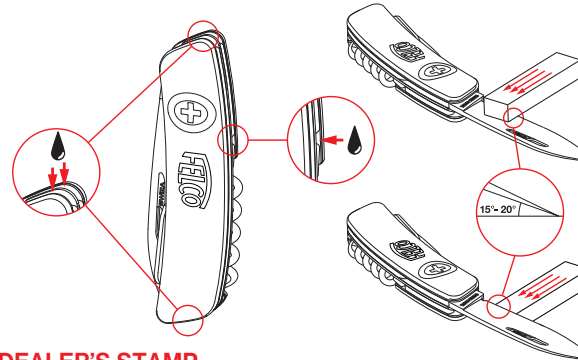
Cleaning, lubrication and sharpening.
Always exercise caution when handling cutting tools.

Cleaning: open and close the tools several times under running warm water till the movements become smooth. If necessary, use washing up liquid and rub each tool with a cloth, and then rinse with plenty of clean warm water. The tool may also be washed occasionally in a dishwasher up to 80°C / 176°F.

Drying: with a soft cloth, wipe the outside and inside of the handle and each individual tool.

Lubrication: if a tool is harder to open than it should be, apply a drop of oil between the heel of the relevant part and the spring, and then on the areas subject to friction.

Sharpening: if needed, sharpen the blade on both sides as shown below.



DEALER'S STAMP



FELCO SA
CH-2206 Les Geneveys-sur-Coffrane
T +41 32 858 14 66, F +41 32 857 19 30
info@felco.com, www.felco.com
or P.O Box 1352, DE-71688 Freiberg
T +49 7141 685 75 75, F +49 7141 685 75 85 www.felco.com

Find us on social media
#felco #felcotools



Swiss Precision. Made to Last.



NEW

SWISS POCKET KNIVES

A choice of 7 models



SWISS MADE

- | | | | | | |
|---|--|-------------------|----|--|----------------------------|
| 1 | | 75 mm blade | 7 | | No. 1 screwdriver |
| 2 | | Blade safety lock | 8 | | Cork screw |
| 3 | | Bottle opener | 9 | | No. 1 Phillips screwdriver |
| 4 | | No. 3 screwdriver | 10 | | Tweezers |
| 5 | | Wire folder | 11 | | 75 mm saw |
| 6 | | Can opener | | | |

Made in Switzerland by SWIZA

Ref. 90518.03-EN

Select your knife from the seven models in the series



FELCO 500
3 functions



FELCO 501
4 functions



FELCO 502
4 functions



FELCO 503
9 functions



FELCO 504
9 functions



FELCO 505
10 functions



FELCO 506
10 functions

Side with integrated safety lock



2 Blade release on the cross



2a Soft touch coating on the sides for a comfortable and secure grip



For safe use, the blade locks at 180° when open; you need to press the cross directly to close the blade. Some materials that give off pigments, such as new or wet jeans, may stain the handle upon rubbing.

Bottle opener / Screwdriver



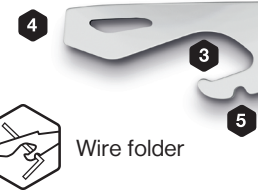
3 Universal bottle opener



4 No. 3 flat-head screwdriver



5 Wire folder



Versatile tool for opening a bottle: block the tool and leverage upwards; flat-blade screwdriver No. 3 and notch for bending metal wires. The semi-locking system is active at 90 and 180 degrees.

Can opener / Screwdriver

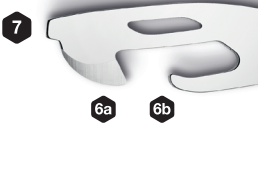


6 Can opener

6a Cutting edge 6b Hook



7 No. 1 flat-head screwdriver



Set the hook outside the tin, tilting the tool slightly inwards to increase its hold; push the cutting edge into the can and cut away the metal in a rotating lever movement. No. 1 flat-head screwdriver at the end of the tool.

Cork screw



8 Cork screw with 5 turns



Sommelier type cork screw with a constant diameter to reduce cork breakage and for easy cork extraction.

Screwdriver



9 No. 1 Phillips head screwdriver



Tool suitable for No. 1 Phillips head screws, offering quick engagement and high-tightening torque.

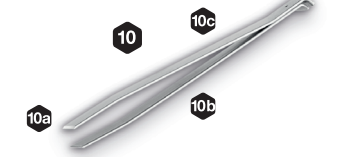
Tweezers



10 Tweezers

10a Angled tip

10b Ergonomic fold shape



10c Ideal thickness of holding zone

Bevelled tip for greater holding precision. The tweezers are suitably thick to increase the spring effect and the form of the fold is designed for an ideal grasp.

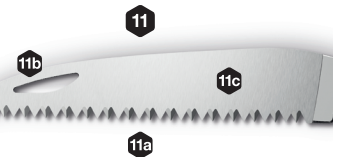
Saw



11 75 mm saw

11a High-performance, efficient tooth design

11b Cut out for easy opening



11c 420 stainless steel, 54 +/- 2 HRC (Rockwell Hardness)

Optimised saw profile to avoid binding. High-performance, efficient cutting teeth to limit the number of cut strokes required.

The FELCO 500 series is appealing in every way:

- A full cut out that makes it easy for right and left-handed users to open the knife blade
- Soft touch coating on the sides for a comfortable and secure grip
- Ergonomic shape that fits perfectly in the hand
- Blade locking system for increased safety and performance
- 3 to 10 functions available
- SWISS MADE

Blade



1 75 mm blade



1a 440 stainless steel, 57 HRC (Rockwell Hardness)

1b Full cut out for easy opening

The cut out makes it easy for right and left-handed users to open the knife.